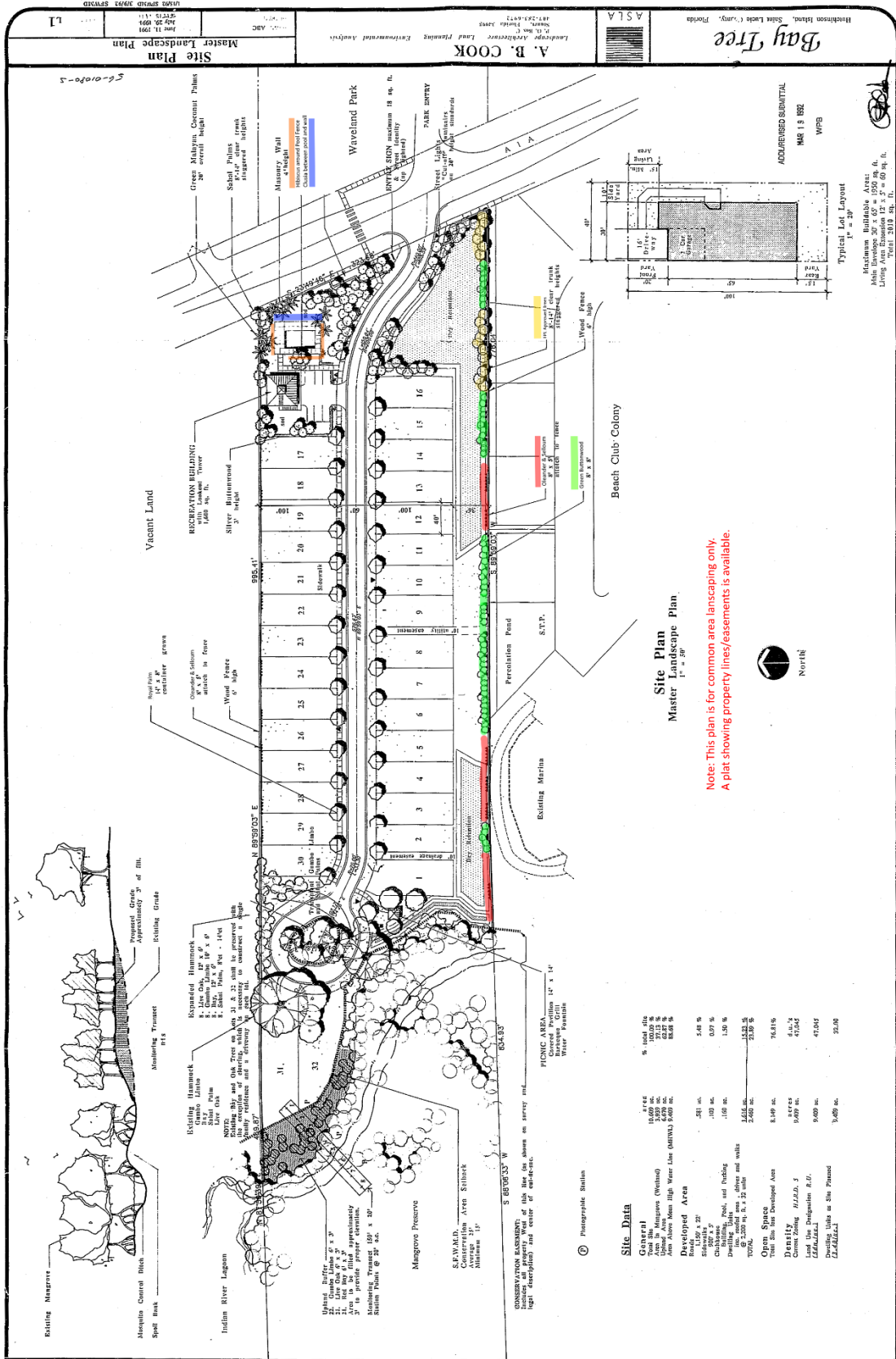


# Bay Tree Common Property Landscape Plan - 2019

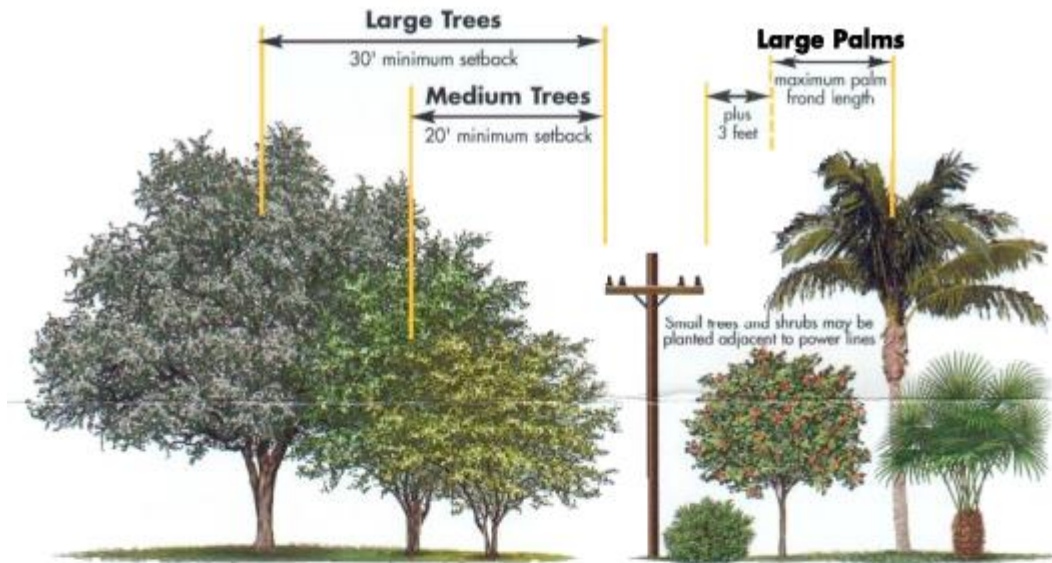


**Site Data**

Category	Value	Percentage
Conservation Area	10,000 sq. ft.	10.00%
Open Space	10,000 sq. ft.	10.00%
Developed Area	80,000 sq. ft.	80.00%
Open Space	10,000 sq. ft.	10.00%
Developed Area	80,000 sq. ft.	80.00%
Conservation Area	10,000 sq. ft.	10.00%
Open Space	10,000 sq. ft.	10.00%
Developed Area	80,000 sq. ft.	80.00%
Conservation Area	10,000 sq. ft.	10.00%
Open Space	10,000 sq. ft.	10.00%
Developed Area	80,000 sq. ft.	80.00%

# Bay Tree Common Property Landscape Plan - 2019

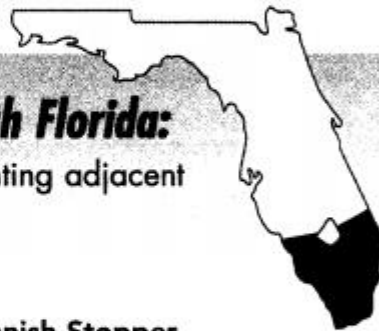
## FL Power Planting Guidelines



Trees Shown at Mature Height

### Recommended Trees for South Florida:

These trees would be suitable for planting adjacent to overhead distribution powerlines



#### Geiger Tree

(*Cordia sebestena*)  
This slow growing tree has striking orange blossoms in the spring. Whether multi-stemmed or with a single trunk, this tree works well as a specimen or patio tree.

Growth Rate: Slow  
Maturity Height x Spread:  
15-20' x 20'  
Foliage: Evergreen



#### Spanish Stopper

(*Eugenia spp.*)  
Narrow canopy and the ability to grow in limited soil space makes this tree ideal for parking lot islands and small landscapes. Drought-tolerant once established.

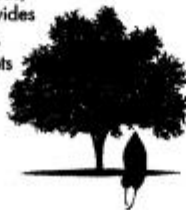
Growth Rate: Slow to moderate  
Maturity Height x Spread:  
15-20' x 15'  
Foliage: Evergreen



#### Silver Buttonwood

(*Conocarpus erectus var. sericeus*)  
Silver to blue-green foliage provides accent as a small tree or buffer. Multi-stemmed, tough tree adapts well to urban areas.

Growth Rate: Moderate  
Maturity Height x Spread:  
15-20' x 20'-30'  
Foliage: Evergreen



#### Glaucous Cassia

(*Cassia surattensis*)  
Beautiful yellow flowers on an outstanding small tree. Prune to maintain tree form. Ideal for small landscapes as an accent tree.

Growth Rate: Moderate  
Maturity Height x Spread:  
15-20' x 15-20'  
Foliage: Evergreen



# Bay Tree Common Property Landscape Plan - 2019

Common Name	Height x Spread	Setback from Power Line	Tree Shape
Bald Cypress	60-80' x 25-30'	30'	Upright & narrow
Brazilian Beautyleaf	30-45' x 30-50'	30'	Spreading canopy
Green Buttonwood	30-40' x 20-30'	30'	Spreading vase
Gumbo Limbo	25-40' x 35-50'	30'	Spreading canopy
Jacaranda	35-40' x 45-60'	30'	Spreading canopy
Live Oak	60-80' x 60 plus feet	30'	Spreading canopy
Mahogany	50' x 50'	30'	Rounded canopy
Paradise Tree	30-50' x 30'	30'	Upright & rounded
Pigeon Plum	20-40' x 20-30'	20'	Upright & rounded
Pink Trumpet Tree	25-35' x 15-25'	20'	Upright oval
Royal Poinciana	25-40' x 50 plus feet	30'	Rounded & spreading
Satinleaf	25-40' x 25'	30'	Upright vase shaped
South Florida Slash Pine	35-50' x 30-40'	30'	Upright & slightly spreading
Wild Tamarind	40-60' x 45'	30'	Weeping spreading



Upright & Narrow



Spreading Canopy



Upright & Spreading



# Bay Tree Common Property Landscape Plan - 2019

## *Conocarpus erectus*, Buttonwood

Buttonwood is ideal for seaside plantings as it is highly tolerant of full sun, sandy soils, and salty conditions. It also tolerates brackish areas and alkaline soils, thriving in the broken shade and wet soils of hammocks. This is a tough tree! It withstands the rigors of urban conditions very well and makes a durable street or parking lot tree. Due to its small size, plant on 15- to 20-foot centers to form a closed canopy over the sidewalk along a street. Purchase single-trunked trees for street and parking lot plantings. Help prevent sprouting at the base of the trunk by training trees to a single trunk when they are young in the nursery. Sprouting is often a bigger problem if multiple trunks are allowed to develop and then they are pruned off to form a single trunk. Trees are tough and long-lasting in the landscape. Old plants grow to 30 feet tall and wide; some plants can grow larger than this. The wood of Buttonwood was used for firewood, lumber, cabinet work, and charcoal making and is a perfect wood for smoking meats and fish. The tree usually develops included bark in crotches of major branches, but the wood is considered strong enough to compensate for this defect to a certain degree. Salt is excreted through glands in the petioles.

This plant can be grown as a multi-trunk tree for use in highway median strips and in landscapes or can be used as a street tree where there is not a need for tall-vehicle clearance beneath the crown. The small stature and low, spreading, branching habit make pruning for vehicular clearance difficult unless it is properly trained from an early age to develop one main trunk. The effort required initially to train this tree for street tree use, however, may be offset by its advantages.

Occurs in Cape Canaveral along the coast to Key West and Bradenton. Often seen with mangroves growing near water.

National champion is 51 x 68 feet in Palm Beach, Florida.



# Bay Tree Common Property Landscape Plan - 2019

## *Nerium oleander*

---

Common name(s): Oleander, Rosebay, Common Oleander

Plant type: evergreen large shrub

Primary method of propagation: cutting

Alternate propagation method(s): seed

*Propagation by Cuttings*

Cutting type: stem tip

Time of year to take cuttings: early Autumn

Cutting maturity: softwood

Rooting environment: intermittent mist

Time to rooting: 6-8 weeks

Comment: Use green wood for cuttings.

*Propagation by Seed*

Time of year to collect seed: no information

Time of year to sow seed: no information

Seed treatment: no information





# Bay Tree Common Property Landscape Plan - 2019

## *Philodendron selloum*

---

This large-leaved, easily grown philodendron makes a dramatic, tropical statement wherever it is used in the landscape, eventually developing a three to four-foot long treelike trunk and a spread of 8 to 10 feet. The deeply divided, usually drooping, medium green leaves grow up to three feet long and 12 to 18 inches wide, appearing on long, smooth petioles. It can be grown outside in central and south Florida, and in a protected area in Gainesville or Jacksonville.

### **General Information**

Scientific name: *Philodendron selloum*

Pronunciation: fill-loe-DEN-drun sell-LOE-um

Common name(s): Selloum

Family: Araceae

Plant type: shrub

USDA hardiness zones: 8B through 11

Planting month for zone 8: year round

Planting month for zone 9: year round

Planting month for zone 10 and 11: year round

Origin: not native to North America

Uses: mass planting; specimen; container or above-ground planter; foundation; accent; suitable for growing indoors

Availability: generally available in many areas within its hardiness range

### **Description**

Foliage Height: 6 to 12 feet

Spread: 10 to 15 feet

Plant habit: round

Plant density: moderate

Growth rate: fast

Texture: coarse

Leaf arrangement: spiral



# Bay Tree Common Property Landscape Plan - 2019

## *Hibiscus rosa-sinensis*

---

This popular landscape shrub creates a bold effect with its medium-textured, glossy dark green leaves and vibrantly colored, four to eight-inch-wide, showy flowers, produced throughout the year (Fig. 1). Cultivars are available with single or double flowers in shades of white, pink, red, yellow, peach, or orange, or combinations of these. Flowers are produced continuously in great abundance, making up for the fact that each flower will last only one or two days. Some selections have variegated foliage and appear to be covered with snow.

### **General Information**

Scientific name: *Hibiscus rosa-sinensis*

Pronunciation: hye-BISS-kus roe-zuh-sye-NEN-sis

Common name(s): Tropical Hibiscus, Chinese Hibiscus

Family: Malvaceae

Plant type: tree

USDA hardiness zones: 9 through 11

Planting month for zone 9: year round

Planting month for zone 10 and 11: year round

Origin: not native to North America

Uses: hedge; border; mass planting; specimen; container or above-ground planter; foundation; trained as a standard; espalier; accent; attracts butterflies; attracts hummingbirds

Availability: generally available in many areas within its hardiness range

### **Description**

Height: 7 to 12 feet

Spread: 6 to 10 feet

Plant habit: vase shape

Plant density: moderate

Growth rate: fast

Texture: medium



# Bay Tree Common Property Landscape Plan - 2019

## ***Clusia rosea* 'Variegata' Pitch-Apple**

This wide-spreading, densely-foliated, rounded, 25 to 30-foot-tall, evergreen tree has a short trunk and broad, thickened, leathery leaves, reminiscent of Southern Magnolia leaves. The leaves are striking with yellow and green marbled variegations. It is, in fact, greatly admired in Cuba and the Virgin Islands as an ornamental. Leaves can be written on with a fingernail. In summer, the showy, pink and white, two to three-inch flowers appear at night and sometimes remain open all morning on overcast days. They appear near the branch tips and are followed by a fleshy, light green, poisonous fruit, three inches in diameter. These persistent fruits turn black when ripe and split open, revealing bright red seeds surrounded by a black, resinous material. The seeds are very attractive to birds and other wildlife and they germinate readily in the landscape and surrounding areas. The black material surrounding these seeds was once used to caulk the seams of boats, hence its common name, 'Pitch-Apple'.

### **GENERAL INFORMATION**

Scientific name: *Clusia rosea* 'Variegata'

Pronunciation: KLOO-see-uh ROE-zee-uh

Common name(s): 'Variegata' Pitch-Apple, 'Variegata' Florida Clusia

Family: Clusiaceae

USDA hardiness zones: 10B through 11

Origin: native to North America

Uses: container or above-ground planter; espalier; hedge; large parking lot islands (> 200 square feet in size); wide tree lawns (>6 feet wide); medium-sized parking lot islands (100-200 square feet in size); medium-sized tree lawns (4-6 feet wide); recommended for buffer strips around parking lots or for median strip plantings in the highway; near a deck or patio; reclamation plant; screen; trainable as a standard; shade tree; small parking lot islands (< 100 square feet in size); narrow tree lawns (3-4 feet wide); specimen; sidewalk cutout (tree pit); residential street tree; tree has been successfully grown in urban areas where air pollution, poor drainage, compacted soil, and/or drought are common

Availability: grown in small quantities by a small number of nurseries

### **DESCRIPTION**

Height: 25 to 30 feet

Spread: 15 to 25 feet

Crown uniformity: symmetrical canopy with a regular (or smooth) outline, and individuals have more or less identical crown forms

Crown shape: round; spreading

Crown density: dense

Growth rate: medium

Texture: coarse

